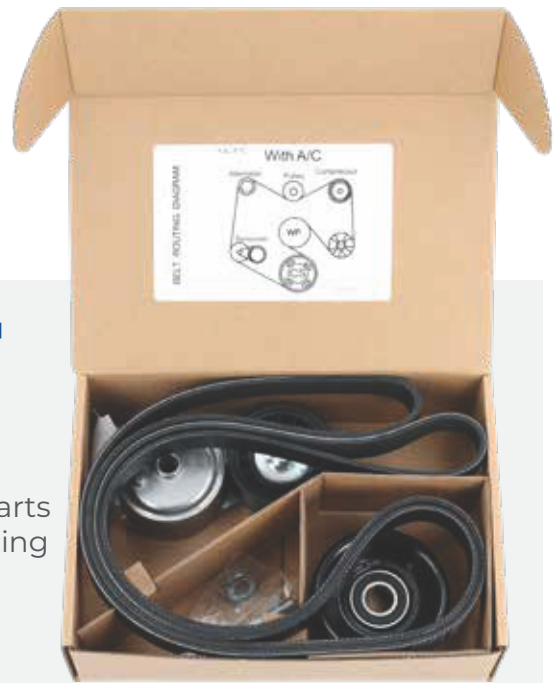




# TENSIONER KIT

## HEART OF THE DRIVE BELT SYSTEM

Cloyes Tensioner Kits are application specific and contain all the parts needed for your job. Tensioner Kits help ensure your vehicle is getting the right parts to get it back on the road with assurance that the "Heart of the Drive Belt System" is ready for the next 90,000 miles.



## DID YOU KNOW?

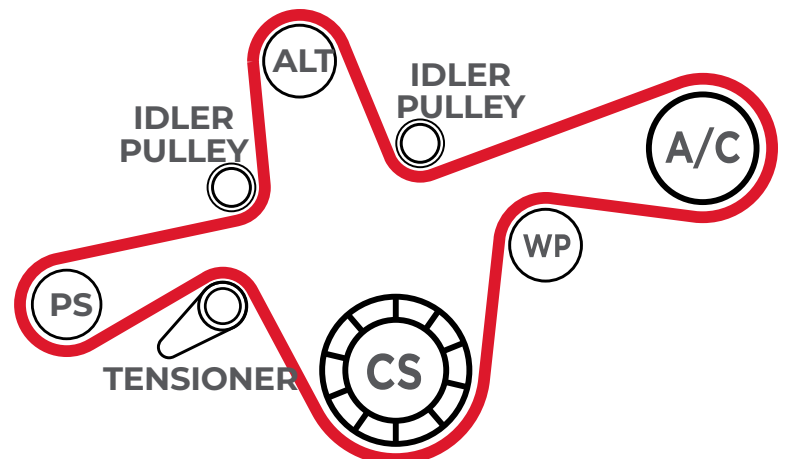
**At 90,000 miles your tensioner has performed over 10 million times.**

Tensioners, Pulleys and Belts need to be checked at 60,000 miles and replaced at 90,000 miles.

## DOING THE JOB **RIGHT** MEANS REPLACING MORE THAN JUST THE **BELT**

When replacing the Water Pump, Power Steering, Compressor, Timing or Alternator is the perfect opportunity to replace your Tensioner, Pulley and Belt.

Single belt systems rely on all components to function properly. One misaligned part or worn bearing can lead to premature failures in other components within the drive belt system.



970 North Masch Branch Rd #170 \* Denton Texas 76207 \* 833.284.6200

© 2024 Cloyes. All Rights Reserved.



# TENSIONER KIT

## HEART OF THE DRIVE BELT SYSTEM

### Benefits:

- Get the job done with all the parts you need, in a single kit.
- All parts meet or exceed OE Fit, Form and Function.
- Application Specific.

Cloyes Tensioner Kits are assembled in a convenient, tightly packed box. Each kit is thoughtfully packed and divided with cardboard to remove possible damage caused by shipping.



## DID YOU KNOW?

**A squeaky belt is usually a symptom of a worn tensioner or pulley.**  
Worn components will not allow the drive belt system to perform correctly.



New Belt

### BELT WEAR

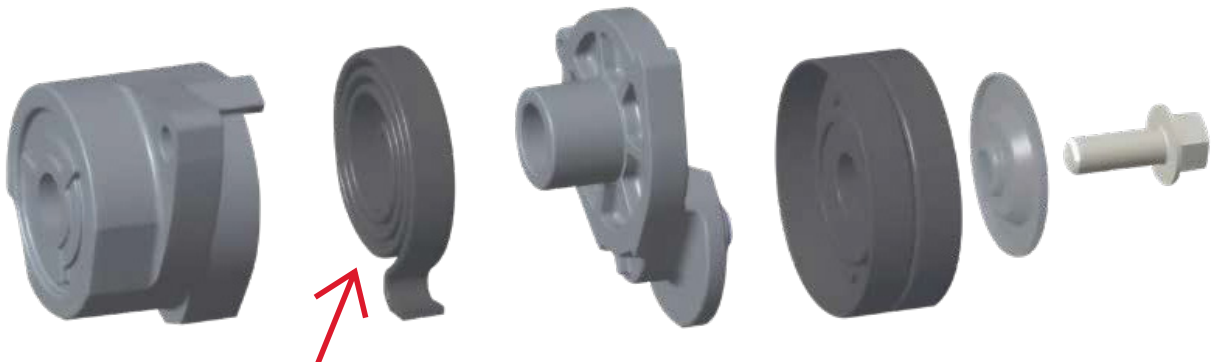


Worn Belt



Belt Gauge

Due to the material used today "EPDM" belts usually won't crack or break, they simply wear down. A belt gauge is needed to determine the actual wear. If you're changing the belt you need to change the tensioner(s) and pulley(s). A worn tensioner can cause the belt to wear at twice the normal rate.



**Tensioner spring will function over 10 million time by 90,000 miles.**

Most tensioners will not show visual wear.

If you are replacing the belt, tensioner replacement is highly recommended.

970 North Masch Branch Rd #170 \* Denton Texas 76207 \* 833.284.6200